



THE SOCIAL EXCLUSION OF DISABLED PEOPLE

Mégane Péric
Typhaine Faucheur
Gabrielle Sire



Summary



- Introduction
- Level and structure of handicapped people exclusion
- Causes and consequences
- Government role in preventing disabled people exclusion
- Institutions and their actions
- Other activities against handicapped people exclusion
- Characteristics of ADAPEI

- Conclusion



Introduction



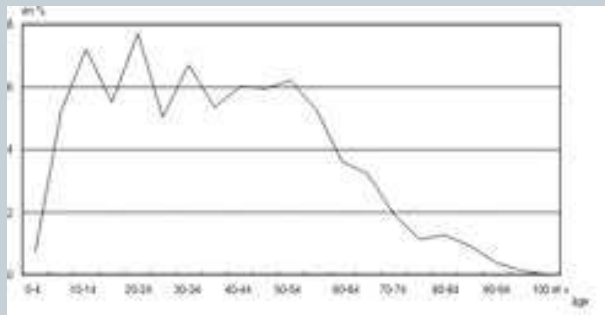
- A little bit of history
- Definition of social exclusion
- Introduction of social exclusion of disabled people in France



1- Level and structure of handicapped people exclusion



- Level of handicapped people exclusion in France
 - Some figures
 - Situation since the enlargement of the European Union (2004)
- Structure of handicapped people



(Source
INSEE)

- Age (cf chart)
- Education

- Forecasting level in France in the coming years



2- Causes and consequences



- **Causes**
 - Cultural reason
 - Fear of the difference
 - Misunderstood
- **Consequences**
 - Health
 - Teaching
 - Employment
 - Precariousness
 - Inaccessibility of services



3- Government role in preventing disabled people exclusion



- The national council of persons with disabilities advisory (CNCPH)
- General Council for Persons with Disabilities
- The minister of social affairs and health



4- Institutions and their actions



- Les papillons blancs du Finistère (UNAPEI)
- Association Kan ar mor
- Association Les genêts d'or (ESAT Briec de l'odet)



5- Other activities against handicapped people exclusion



- Law of the February 11th 2005: for equal rights and opportunities, participation and citizenship of handicapped people.
 - Shops accessibility obligations
 - Help to employment
- University disabilities charter



6- Characteristics of UNAPEI



- Union of associations of parents of the mentally disabled and their friends
- Created in 1960
- Example of ESAT



Conclusion



- Still disparities
- French government should increase budget



Thanks for your attention

Do you have any questions?

